


**Available in 80 and 120 Gallon Universal Side/Top Connect Models**
**▶ 12-Year Limited Tank and Parts Warranty\***

- New flexible design allows installation of the collector feed & return in either the side or top connection ports
  - Brass drain valve
  - Special threaded stud located near the outlet for attachment of tank sensors
  - Temperature and pressure relief valve included
  - High efficiency heating element
  - Tank lining resists corrosion and prolongs tank life
  - Anode rod equalizes aggressive water action for prolonged tank life
- Cold water inlet, hot water outlet, relief valve and anode rod at top of tank for easy access and fast, economical installation
  - Automatic temperature control
  - Over temperature protector

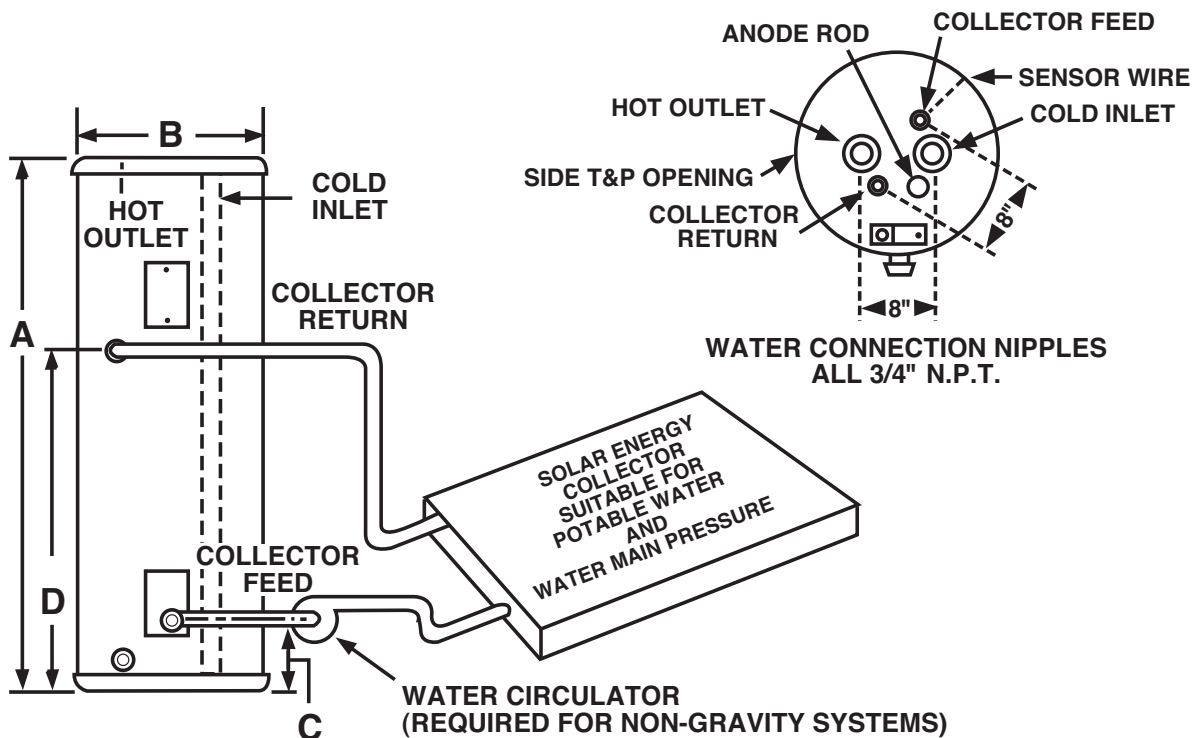
\*See Residential Warranty Certificate for complete information.



| DESCRIPTION                       |           |              |                       | ROUGHING IN DIMENSIONS (SHOWN IN INCHES) |            |                            |                              | ENERGY INFO.            |                  |
|-----------------------------------|-----------|--------------|-----------------------|--|------------|----------------------------|------------------------------|-------------------------|------------------|
| TYPE                              | GAL. CAP. | MODEL NUMBER | ELEMENT WATTAGE UPPER | HEIGHT A                                 | DIAMETER B | HEIGHT TO COLLECTOR FEED C | HEIGHT TO COLLECTOR RETURN D | APPROX. SHIP WT. (LBS.) | APPROX. R-FACTOR |
| <b>UNIVERSAL SIDE/TOP CONNECT</b> |           |              |                       |  |            |                            |                              |                         |                  |
| TALL                              | 80        | SU12-80U-1   | 4500 W*               | 58-3/4                                   | 24-1/2     | 3                          | 38-1/4                       | 192                     | R-17.3           |
|                                   | 120       | SU12-120U-1  | 4500 W*               | 62                                       | 28-1/4     | 3-3/4                      | 38-1/2                       | 336                     | R-16.7           |
|                                   | 80        | SU12-80U-T   | Storage Only          | 58-3/4                                   | 24-1/2     | 3                          | 38-1/4                       | 192                     | R-17.3           |
|                                   | 120       | SU12-120U-T  | Storage Only          | 62                                       | 28-1/4     | 3-3/4                      | 38-1/2                       | 336                     | R-16.7           |

- \* Heaters furnished with standard 240 volt AC, single phase non-simultaneous wiring and 4500 watt heating element.
- If heating elements of different wattages than those shown are demanded by zone requirements, they must be specifically requested.
- SunEarth models meet all current requirements for solar storage tanks.
- The tanks are lined and are designed to operate up to 150 PSI.

**This unit uses the potable water within the tank for circulation through the solar system.**



*In keeping with its policy of continuous progress and product improvement, the manufacturer reserves the right to make changes without notice.*